

LIGHT CURTAINS

NT1041 Infra-Red Light Curtain

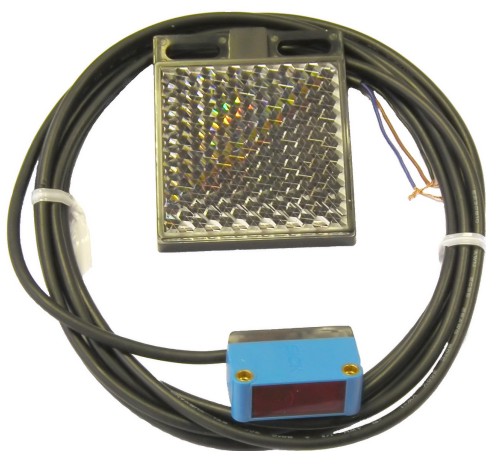


The NVM Infra-red Light Curtains are compatible with all NVM controller/ receivers that accept photocells including the NT1103 intelligent Garage Door Controller



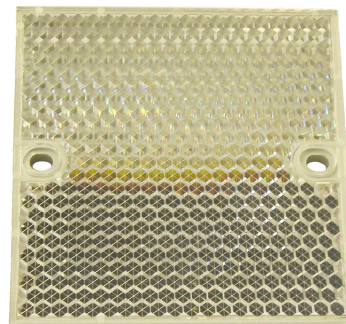
ITEMS	PARAMETERS
Scanning Beams	94 beams
Number of Infrared Diodes	17 pairs
Infrared Diode Range	108mm
Size	12*22*1820mm
Response Time	10 - 50 seconds
Detecting Height	25 - 1710mm
Detecting Range	0 - 5.0m moving door
Deviation Angle	≤ 10°
Allowable Deviation Position	Vertical : ± 10mm / 7° Horizontal : ± 5mm / 5°
Protecting States	Cable fault Power fault
Protection Grade	IP65 standard
Indicator	Power (green LED) System fault/blocked (Orange LED)
Authentication	CE (EMC)

Photocell and Reflector



NT1020 Photocell Reflector with Fixing Brackets
Maximum Range 4.7 MTRS

NT1020A 80mm x 80mm Reflector to suit NT1020 Photocell
Maximum Range 7.4 MTRS



Photocells

NT1021



- Pin Point LED for a bright, precise light spot
- Durable metal threaded inserts
- SICK ASIC technology - the result of decades of experience in photoelectric sensors
- Large, user-friendly potentiometer
- Large, bright indicator LEDs
- adjustable receiver sensitivity via 270° turn potentiometer (depending on type)
- IP 67 enclosure rating

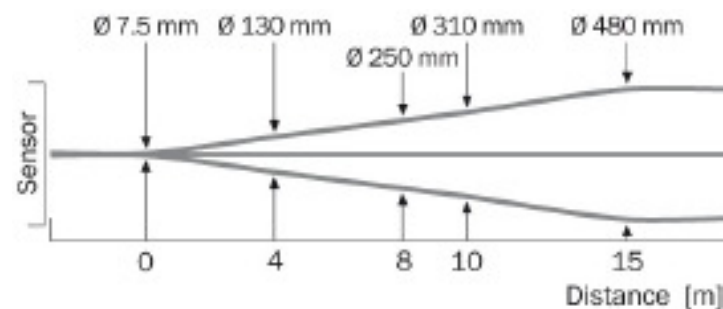
The Benefits

- Easy alignment and precise object detection due to a highly visible PinPoint LED
- Quick and easy mounting and high durability due to threaded metal inserts
- SICK ASIC technology provides high performance and excellent reliability
- Easy to adjust due to large, user-friendly potentiometer
- Easy to monitor due to large, bright indicator LEDs
- Easy installation with SICK accessories

Sensor/detection principle:	Through-beam photoelectric sensor
Dimensions (W x H x D):	12 mm x 31.5 mm x 21 mm
Housing design (light emission):	Rectangular
Sensing range max.:	0 m ... 15 m
Sensing range:	0 m ... 10 m
Type of light:	Visible red light
Light source:	PinPoint LED ¹⁾
Light spot size (distance):	Ø 375 mm (12 m)

Average service life of 100,000 h at $T_A = +25\text{ °C}$

Light spot size



Safety Edges



NE001 Safety Edge Sensor Processor (WIRED)

NE050 Magnet to suit NE001



NE011 Safety Edge Sensor Processor (WIRELESS)

NE051 Magnet to suit NE011



NE010 Safety Edge Contacts ,0.25mm Cable Suit NE100, NE101 (Set)

NE020 Safety Edge Contacts ,0.25mm Cable, Suit NE110, NE111 (Set)

NE030 Safety Edge Contacts ,0.25mm Cable, Suit NE120, NE130 (Set)



NE200 Safety Edge Rubber Plug, suits NE100, Rubber Edge (Pair)

NE201 Safety Edge Rubber Plug, suits NE101, Rubber Edge (Pair)

NE210 Safety Edge Rubber Plug, suits NE110, Rubber Edge (Pair)

NE220 Safety Edge Rubber Plug, suits NE120, Rubber Edge (Pair)

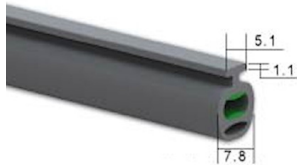
NE230 Safety Edge Rubber Plug, suits NE130, Rubber Edge (Pair)

NE240 Safety Edge Rubber Plug, suits NE140, Rubber Edge (Pair)

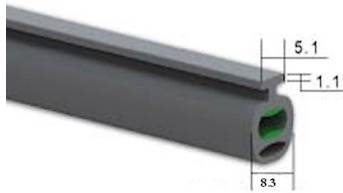
Safety Edge Rubber



- NE100 Safety Edge Rubber, 16mm x 6.2mm x 1.8mm
Gasket Type (MTR)
- NE101 Safety Edge Rubber, 16mm x 6.2mm x 1.8mm
Twin Fin Type (MTR)



- NE110 Safety Edge Rubber 7.8mm x 5.1mm x 1.1mm
Gasket Type (MTR)

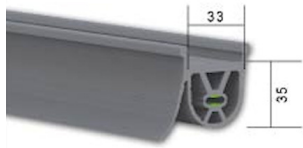


- NE111 Safety Edge Rubber, 8.3mm x 5.1mm x 1.1mm
Gasket Type (MTR)

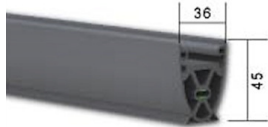


- NE120 Safety Edge Rubber, 40mm x 55mm Track Type (MTR)

Safety Edge Rubber



NE130 Safety Edge Rubber, 33mm x 35mm Track Type (MTR)



NE140 Safety Edge Rubber, 36mm x 45mm Track Type (MTR)



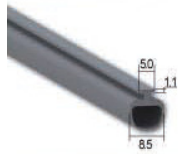
NE300 Safety Edge Curly Wire, 2.5 Mtr Extending (NE001) Wired

Plain Rubber



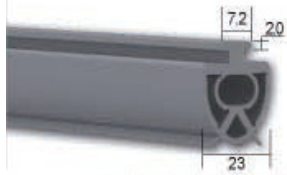
NE400

Plain Edge Rubber, 16mm x 6.2mm x 1.8mm Gasket Type (MTR)



NE410

Plain Edge Rubber, 8.5mm x 5.0mm x 1.0mm Gasket Type (MTR)



NE420

Plain Edge Rubber, 23mm x 7.2mm x 2.0mm Gasket Type (MTR)

Safety Edge Track



NE700 Safety Edge Track, 16mm , Suits NE100, NE400, Aluminium



NE720 Safety Edge Track, 40mm , Suits NE120, Aluminium



NE730 Safety Edge Track, 33mm , Suits NE130, Aluminium



NE740 Safety Edge Track, 36mm , Suits NE140, Aluminium